



Supplying the best... **with the best**

Our Suits

Features | Information | Care



www.signalone.com.au

features

Mens Poly Wool & **Mens** Poly Bamboo

All fabrics have a Stretch feature for the benefit of added comfort.

All lined garments are lined with a stretch lining, which has some moisture absorbing benefit, complimenting the coordinated performance outerwear fabrics.

Most garments have been enhanced with Stretch Fusing for added comfort.

MENS PANTS

- RHF pocket with concealed pocket for added personalized options.
- Stretch waist fusing, creating additional waist comfort.
- Rear waist with extra centre seam allowance, creating additional 'fractional fitting' option for waist comfort.

MENS JACKETS

- Stretch fusing has been introduced for added comfort
 - Internal pocketing for added personalized options
 - Embroidery access through LHS inside seam concealed zip.
-

Mens Poly Viscose

Great value alternative. Poly Viscose blend. Cut for comfort and easy fit.

MENS PANTS

- Flat front trousers

MENS JACKETS

- Single Breasted • 2 Button Jacket with 2 Flap Pockets • Top Welt Pocket • Fully lined
-

Ladies Poly Wool & **Ladies** Poly Bamboo

All fabrics have a Stretch feature for the benefit of added comfort.

All lined garments are lined with a stretch lining, which has some moisture absorbing benefit, complimenting the coordinated performance outerwear fabrics.

Most garments have been enhanced with Stretch Fusing for added comfort.

LADIES PANTS

- Extra wide side seams allowing for 'fractional fitting' adjustments
- Rear waist centre seam allowance, creating additional 'fractional fitting' adjustments for waist comfort.
- Stretch waist fusing, creating additional comfort at waist.

LADIES SKIRTS

- Extra wide side seams allowing for 'fractional fitting' adjustments
- Stretch waist fusing creating additional comfort at waist.

LADIES JACKETS

- Stretch fusing has been introduced for added comfort
- Internal pocketing for added personalized options.
- Embroidery access through LHS inside seam concealed zip.

technical information

Style specifications for Poly Wool, Poly Bamboo and Poly Viscose garments.

Mens Poly Wool



2 Button Jacket

Style	Poly Wool - 384011
Sizes	92R - 142R
Colours	Black, Charcoal, Navy



One Pleat Pant

Style	Poly Wool - 374011
Sizes	77R - 122R
Colours	Black, Charcoal, Navy

Mens Poly Bamboo



2 Button Jacket

Style	Poly Bamboo - 380111
Sizes	92R - 142R
Colours	Black, Charcoal, Navy



One Pleat Pant

Style	Poly Bamboo - 370111
Sizes	77R - 102R, 107S - 127S
Colours	Black, Charcoal, Navy

Mens Poly Viscose



2 Button Jacket

Style	Poly Viscose - 3300
Sizes	Style
Colours	Black



Flat Front Pant

Style	Poly Viscose - 3310
Sizes	Style
Colours	Black

Ladies Poly Wool



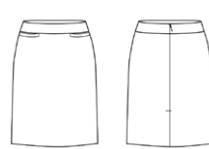
Longerline Jacket

Style	Poly Wool - 364012
Sizes	4 - 26
Colours	Black, Charcoal, Navy



Relaxed Fit Pant

Style	Poly Wool - 314011
Sizes	4 - 26
Colours	Black, Charcoal, Navy



Relaxed Fit Lined Skirt

Style	Poly Wool - 324011
Sizes	4 - 26
Colours	Black, Charcoal, Navy

Ladies Poly Bamboo



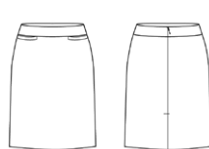
Longerline Jacket

Style	Poly Bamboo - 360112
Sizes	4 - 26
Colours	Black



Relaxed Fit Pant

Style	Poly Bamboo - 310111
Sizes	4 - 26
Colours	Black



Relaxed Fit Lined Skirt

Style	Poly Bamboo - 320111
Sizes	4 - 26
Colours	Black, Charcoal, Navy

comfort smart fabrics

New technology that meets workplace demands on work garments.

POLY WOOL STRETCH SUITING

55% Polyester | 43% Wool | 2% Elastane



black



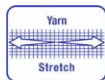
charcoal



navy

All the quality comfort features of wool combined with the durability of polyester and elastane for added stretch comfort.

Save money on dry cleaning by machine washing at home (simple label recommendations – pants & skirts only).



POLY BAMBOO STRETCH SUITING

92% Polyester | 8% Bamboo Charcoal



black



charcoal



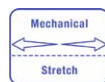
navy

The workplace is an active environment with many demands placed on your garments – functionality, performance, comfort, wear and tear.

Signal One now introduces to the workplace the most comfortable easy care woven outerwear fabric which, through natural fibre application, presents performance features such as: quick moisture absorption, breathable, thermal regulating, bacterial resistant, removes odours and is crease resistant.

This fabric is ideal for those active work places such as Hospitality and Healthcare.

The COMFORT STRETCH component has been cleverly woven into the fabric to create a mechanical stretch.



POLY VISCOSE SUITING

65% Polyester | 35% Viscose



black

Our great value, budget, synthetic suit

The blend of polyester with viscose contributes durability, resiliency and shape retention.

The wet strength of the resultant fabric is also improved, viscose provides absorbency and soft texture.

care standards

RANGE

POLY WOOL



FABRIC

55% Polyester

43% Wool

2% Elastane

CARE INSTRUCTIONS

Pants and Skirts

Machine wash on wool cycle or handwash using recommended wool detergent. Wash with similar colours. Rinse well. Do not bleach, soak, tumble dry. Line dry in shade. Warm iron (wool settings).

Recommend dry clean 30c (P).



Jackets

Dry clean only 30c (P).

RANGE

POLY BAMBOO



FABRIC

92% Polyester

8% Bamboo

CARE INSTRUCTIONS

Pants and Skirts

Warm or cold machine wash.

Wash with similar colours.

Do not bleach. Do not tumble dry.

Line dry in shade. Warm iron.

Recommend dry clean 30c (P).



Jackets

Dry clean only 30c (P).

RANGE

POLY VISCOSE



FABRIC

65% Polyester

35% Viscose

CARE INSTRUCTIONS

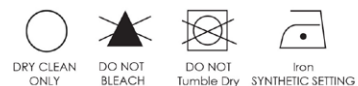
Pants and Jacket

Dry clean only.

Do not bleach, soak, tumble dry.

Line dry in shade.

When Ironing cover with cloth (synthetic settings).



why bamboo?



ADVANTAGES OF USING BAMBOO

- Bamboo grows rapidly and naturally without any pesticides, herbicides or fertilizers, and improves soil quality by preventing water run-off and rebuilding eroded soil;
- Bamboo grows naturally, without the need for agricultural tending and large diesel exhaust-spewing tractors to plant seeds and cultivate the soil;
- Bamboo plantations are large factories for photosynthesis which reduces greenhouse gases – bamboo plants absorb about 5 times the amount of carbon dioxide and produces about 35% more oxygen than an equivalent stand of trees;

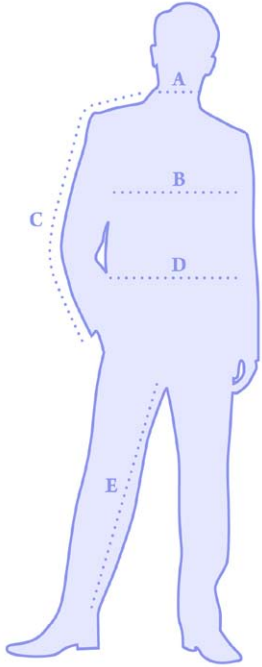
PROPERTIES OF BAMBOO CHARCOAL FABRICS

- Fabric is soft, non-irritating and hypoallergenic because of the smooth and round structure of its fibres;
- Bamboo is naturally anti-bacterial and anti-fungal because of a unique bacteriostatic agent called "bamboo kun" which also helps bamboo resist harbouring odours. The bamboo kun stops odour-producing bacteria from growing and spreading in the cloth, allowing bamboo clothing to be more hygienic and to remain fresher smelling;
- Bamboo is highly absorbent and wicks water away from the body 3 to 4 times faster than cotton. In warm, humid and sweaty weather, bamboo clothing helps keep the wearer drier, cooler and more comfortable and doesn't stick to the skin;
- The fibre structure makes bamboo fabrics more breathable and thermal regulating than cotton, hemp, wool or synthetic fabrics;
- Fabric is naturally more wrinkle-resistant than cotton, and shrinkage during washing and drying is minimal;
- Fabrics absorb dyes faster and more thoroughly than cotton, modal and viscose, with better colour clarity, and do not need to be mercerized to improve their lustre and dye-ability.

measurement size guide

The body measurement size chart below is a guide only, please choose the size closest to your own body measurements.

MENS



A. Neck

Measure loosely around neck at collar level, making allowance for comfort.

B. Chest

Keep the tape up under arms and around shoulder blades while measuring around the fullest part of chest.

C. Arm

Lay a shirt out flat and measure from centre back neck seam to top of shoulder seam, and then to end of cuff down length of sleeve.

D. Waist

Hold one finger between body and tape while measuring around waist. Measure over shirt at position pants would normally be worn.

E. Inner Leg

Measure inside leg (from crotch to hem) of a well-fitting pair of pants.

JACKETS

Size	87R	92R	97R	102R	107R	112R	117R
Chest (cm)	87	92	97	102	107	112	117
Waist (cm)	72	77	82	87	92	97	102

Size	122R	127R	132R	137R	142R
Chest (cm)	122	127	132	137	142
Waist (cm)	107	112	117	122	127

PANTS

Size	77R	82R	87R	92R	97R	102R	107R	112R	117R	122R
Waist (cm)	77	82	87	92	97	102	107	112	117	122
In Leg (cm)	81	81	82	82	83	83	84	84	84	84

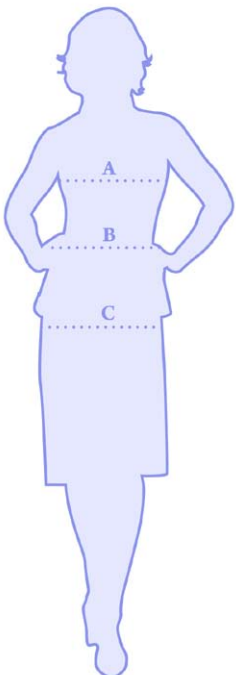


Contemporary Fit Waist

Sits slightly lower in waist than traditional fitting pant

LADIES

The waist specifications are the natural waist measurements, which have to be considered even though the garments will fit lower.



A. Bust

Keep the tape up under arms and around shoulder blades while measuring around the fullest part of the bust. Hold one finger between body and tape.

B. Waist

Hold one finger between body and tape while measuring around waist.

C. Hips

Measure around fullest part of hips (about 20 – 24cm down from waist) while standing naturally.

JACKETS, VESTS, SKIRTS AND PANTS

Size	4	6	8	10	12	14	16
Bust (cm)	76.5	79	84	89	94	99	104
Waist (cm)	58.5	61	66	71	76	81	86
Lower (cm)	Add approximately 10 – 13cm to waist measurement as this will vary.						
Hip (cm)	86.5	89	94	99	104	109	114

Plus Sizing	18	20	22	24	26	28
Bust (cm)	111	116	121	126	131	136
Waist (cm)	93	98	103	108	113	118
Lower (cm)	Add approximately 10 – 13cm to waist measurement as this will vary.					
Hip (cm)	121	126	131	136	141	146



Mid Rise

Sits slightly below your waist

Hips wider than waist

Note: The size measurement chart is a guide only, actual sizing may vary according to the style and fit of the garment.

